

ALL AROUND THE **MASON** NATION



ABOUT US

University Life Regional Campuses supports every student across Mason's campuses and locations beyond Fairfax. We coordinate with offices throughout the university to ensure that each student receives the support, information, and resources they need to be successful. The University Life Regional Campuses team delivers a vast array of engaging programs and events that aim to enhance each student's sense of belonging at each campus.

George Mason University is comprised of three campuses and two instructional sites in the United States, all within the Commonwealth of Virginia. Additionally, Mason has a campus based in South Korea that is part of the Incheon Global Campus in Songdo.



ALL AROUND THE **MASON** NATION



"All Around the Mason Nation" you can find examples of excellence. From the east in Songdo to the west in Front Royal, student life at Mason truly spans the globe.

In the pages that follow you will learn about Mason's three campuses and two instructional sites that exist beyond the Fairfax Campus; each one integrated into the fabric of our vibrant university community. University Life actively partners with students, faculty, and administrators across every Mason location, tapping into the unique assets and qualities of each surrounding community. University Life's mission to support student well-being and success permeates our work, no matter where students are living and learning.

As we look "All Around the Mason Nation" we see examples of contributions and achievements that support our University Life vision: Every Student Succeeds.

Lori Cohen Scher, Ph.D.
Assistant Dean,
University Life Regional Campuses



ARLINGTON CAMPUS

George Mason University's Arlington Campus is located in the Virginia Square neighborhood of Arlington County. The Arlington Campus is home to over 2,000 students that attend:



Antonin Scalia Law School,



Jimmy and Rosalynn Carter School for Peace and Conflict Resolution,

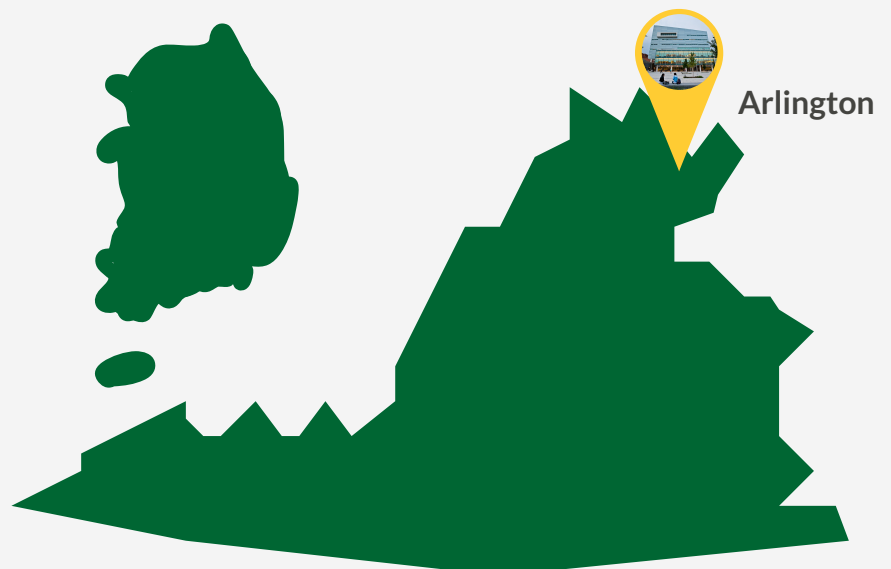


Schar School of Policy and Government,



programs in **Arts Management** and the **School of Business**, and continuing professional education through Mason's **Executive and Professional Education.**

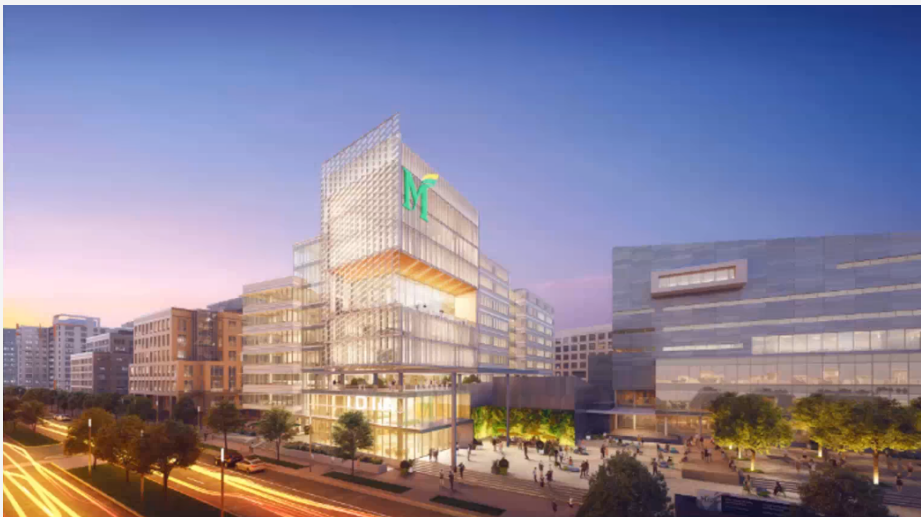
Founded in 1979 the Arlington Campus began as the home to Antonin Scalia Law School. The campus has been expanding ever since and now includes Van Metre Hall, Hazel Hall, and Vernon Smith. The campus is excited to continue this growth with the **Institute for Digital InnovAtion (IDIA).**





In the next five years, Mason's Arlington Campus will undergo a \$250 million transformation that will serve as a critical catalyst in the further activation of the Rosslyn-Ballston corridor, a dynamic and growing innovation district with a thriving high-tech ecosystem.

The Mason Institute of Digital InnovAtion (IDIA) HQ will not only support the university's tech-based research and related educational programs but will provide collaboration and convening spaces to support public programming for the Arlington community.



Arlington Student Feature

"The Arlington campus is a vibrant community of students, faculty, and staff that are committed to improving the world around them. The campus is embedded within a lively community in Arlington which offers access to all kinds of amenities and Washington D.C.. One of my favorite things about the campus is that you can walk around the buildings and join an event on a wide variety of topics and issues. On a daily basis you can always find a social, career, or academic event happening across campus. My recommendation to the Mason Nation when they visit the Arlington campus is to mingle, make connections, and make sure to explore the area; it truly has everything! Insider tip: make sure to check out the University Life Arlington suite. It is a great place to meet new people!"

Ziad Al Achkar

Degree: PhD Candidate at the Carter School



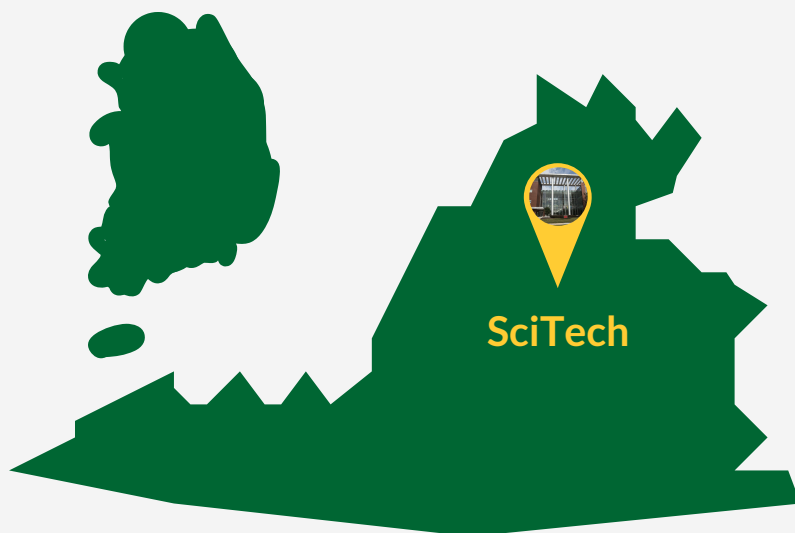
@masonulifearl



<https://ularlington.gmu.edu>

SCIENCE AND TECHNOLOGY CAMPUS

The SciTech campus, founded in 1997, is in Innovation Park, the largest research business park in Northern Virginia, home to technology companies and government agencies conducting cutting-edge research. It's also the site of the Hylton Performing Arts Center, the Freedom Aquatic and Fitness Center, the EDGE team building experiential learning program, and the Virginia Serious Games Institute.



The SciTech campus has been growing steadily since 1997 with the addition of Discovery Hall and Katherine G. Johnson Hall. We will also be home to the Forensic Science Research and Training Laboratory starting in Spring 2021. The latest renovation is of our student lounge, The Source. Visit Katherine Johnson 122 to see the new furniture and wall art!

We are home to over 2,000 students from over 20 different majors, including students from the School of Kinesiology, the School of Systems Biology, GeorgeSquared, and the Enlisted to Medical Degree Preparatory Program. At SciTech over 100 graduate students call Beacon Hall home. Visit the campus to discover your favorite space!





"My experience at the SciTech Campus has been very unique. I attended classes on campus for my first semester and then COVID hit and we were all attending classes from home. During the short time I was on campus, the vibes I got were always positive and welcoming. The professors are helpful and motivating and the staff around campus are always ready to help if one needs anything. I loved coming to campus and attending classes, going to the Freedom Center, studying at Mercer and having a snack or coffee at Randall's. I felt like this is somewhere I can study peacefully. Mercer especially is so welcoming and comfortable to sit and study or just read. Another great place I love to be on campus is The Source, the student lounge."

Pranjal, Exercise, Fitness, and Health Promotion, MS

My SciTech experience has been everything I have wanted and more! The SciTech campus allows me to connect to my mentors and fellow graduate students in a way that I never could on the Fairfax campus. Additionally, the research experience on this campus is so full of creativity and collaboration which really makes it truly unique. My favorite space on the SciTech campus would have to be the Piedmont Trail which is a part of the EDGE on campus. Taking a short walk on the trail can really reset your mind after being in lab all day! I enjoy studying at my graduate research assistant desk in the IABR building. Being right next to my personal coffee maker really elevates the study experience!

Marissa, Biosciences, PhD



<https://www.ulscitech.gmu.edu>



@masonulifescitech

MASON KOREA

SONGDO CAMPUS

Mason Korea was established in 2014 as part of the Incheon Global Campus, aiming to become the best global education hub in Northeast Asia. George Mason University was invited by the Incheon Free Economic Zone Authority to come to Songdo and participate in an innovative initiative to educate the next generation of global leaders.

Mason Korea offers U.S. degrees in six undergraduate disciplines. Approved by the Korean Ministry of Education, the degree programs offered to afford students the unique opportunity to spend three years at Mason Korea in Songdo and one year in the U.S. at Mason in Fairfax, Virginia. When students graduate, they receive the same degree as all students from George Mason University.

Did you know the city of Songdo...



was built on reclaimed land from the Yellow Sea



G Tower, a landmark building, is a hub for UN offices in Korea, has a Sky Garden open to visitors



Has an abundance of parks: Songdo Central Park where you can easily find places to take breaks and Songdo Solchan Park which is located right next to the ocean



Includes fifteen miles of bike lanes that go through the district



Is an eco-friendly smart city designed to reduce the need for cars



produces a third fewer greenhouse gases compared to another city of the same size

The Mason Korea experience is truly unique; you are able to learn within close proximity to the capitals of two vibrant nations. Because of this, students have international networking opportunities that truly span the globe. With over 600 diverse students at Mason Korea, representing over 20 countries, students are exposed to diverse cultures and learn to become global leaders in their fields.

Mason Korea Student Feature



"Mason's Songdo Campus has great accessibility to big cities. The majority of students at the Korean campus are not native English speakers. However, they diligently study the language to transition to the main campus to finish taking courses and to immerse in Mason's great student diversity. Next time when you sign up for classes, consider taking them at Mason Korea. You will be amazed by the cultural experience it offers to widen your perspectives!"

Yujin, Business Management, BS

**Interested in learning more about
Mason Korea?**



masonkorea.gmu.edu
<https://masonkorea.gmu.edu/us>



@masonkorea



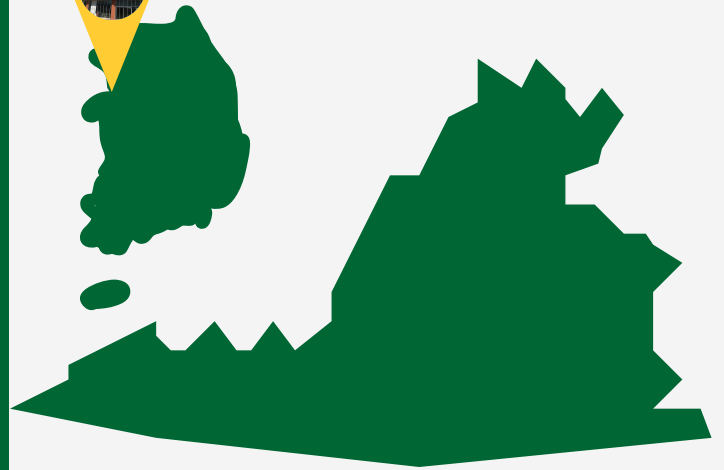
@gmukorea



@mason_korea



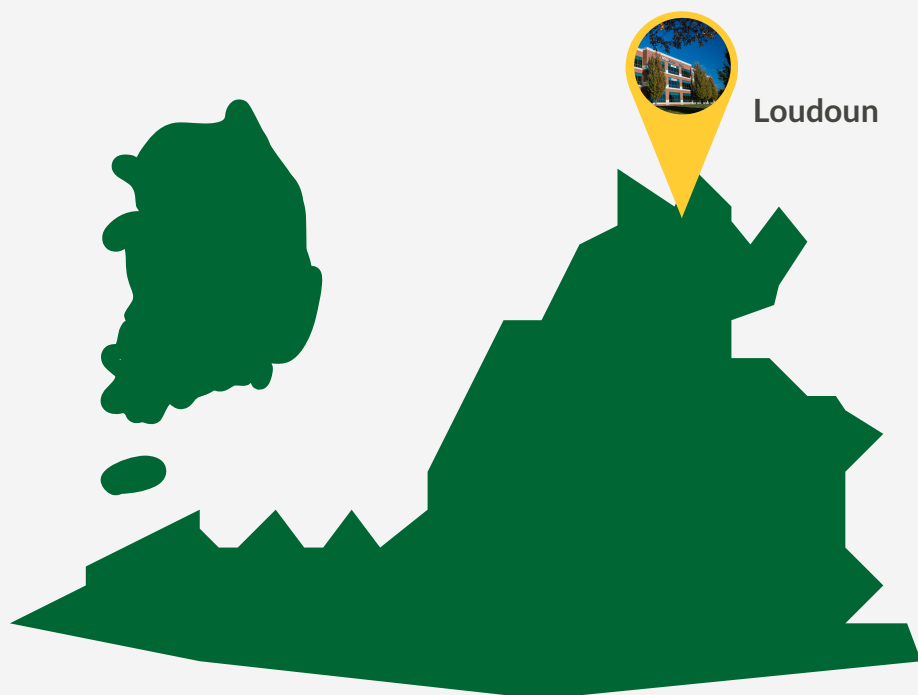
Mason Korea



LOUDOUN

The Loudoun instructional site offers coursework in education, information technology, and business, along with undergraduate general education courses. Mason in Loudoun shares its location with Northern Virginia Community College (NOVA) at Signal Hill Plaza in Sterling, Virginia.

Mason in Loudoun provides learning opportunities for multiple generations of learners. The Loudoun instructional site offer classes for our traditional undergraduate and graduate students, non-credit classes for our retired generation through Osher Lifelong Learning Institute, and gaming and technology camps through the MGT summer camp program to our potential future Patriots ranging from elementary school through high school.





Community Partner Feature

The Loudoun site also boasts several local restaurants, such as The Don's Woodfire Pizza, supporting the Mason community since 2008!

Waleed, founder and head chef states, "We've been working with University Life during the welcome and final exam weeks to deliver our pizzas to the students and faculty members for more than a decade now. We are eager to resume our services once we can safely do so."

- Waleed, Founder & CEO

To participate in and support the **#AllAroundMasonNation** initiative, The Don's Pizza is offering a Mason-exclusive discount this week! Use the promo code **GMUDiscount** and show your Mason ID Card when you call in to place your order for a 10% discount.



<https://loudoun.gmu.edu/>



@gmuloudoun

SMITHSONIAN MASON

Located on the grounds of the Smithsonian Conservation Biology Institute in Front Royal, Virginia, the Smithsonian-Mason School of Conservation's mission is to develop leaders in biodiversity conservation through innovative education, training, and research. The Smithsonian-Mason School of Conservation (SMSC) is about an hour's drive west from Washington, D.C., nestled alongside the 196,000-acre Shenandoah National Park. The facility covers 3,200 acres of forest, grassland, and pasture. Its closed research facility gives you access to science centers focused on rare and endangered species, a variety of ecosystems for field study, and world-renowned scientists working on current conservation challenges.

The Smithsonian-Mason School of Conservation, where students are taught and mentored by Smithsonian scientists, is the only program of its kind in the nation. Highly qualified world experts, including Smithsonian scientists, Mason faculty, and colleagues from other U.S. and international conservation organizations, provide students with direct connections to the most current teaching, research techniques, and work in the field. Students thrive in a collaborative atmosphere of creative, analytical thinking.





"The SMSC program provides a once-in-a-lifetime experience to meet with the front-runners of conservation, engage in highly applicable conservation practice, and network with other professionals. I feel more like I am attending a fun adventure camp than at a textbook-style university semester. The knowledge learned and memories made here are sure to last a lifetime!"

Samira, Environmental Science, BS

"I would recommend not be afraid to step out of your comfort zone. Anyone can attend SMSC regardless of their major and it is an opportunity that everyone should take advantage of since you can't develop the network and skills you learn at SMSC anywhere else!"

Darryl, Environmental and Sustainability Studies, BA



<https://www2.gmu.edu/academics/smithsonian-mason-school-conservation>



@smconconservation